



## EXTERNAL BLINDS

PERFECT IN EVERY DETAIL

With external blinds, you can stop sunlight before it reaches the windows. By tilting the slats, you can ventilate and regulate the amount of light in the interior. External blinds protect your privacy and make your home an even more enjoyable place.

Everything made to measure and with a 4-year warranty.

# EXTERNAL BLINDS



Protects your privacy against unwanted looks from the outside.



Allows, at the same time, both ventilation and light regulation, when the window is open.



By pulling the blinds down and tilting the slats, you regulate the amount of light and temperature inside your home.



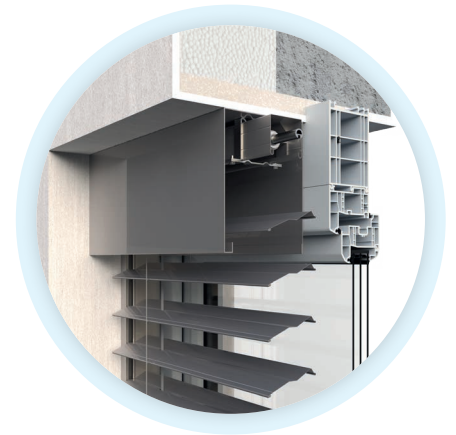
Prevents the interior from overheating in summer and helps save air conditioning costs.

## Types of installation



### WITH ALUMINIUM SHEET COVER PLATE

The sheet covers the head rail and slat bundle, protecting it from the weather when the blind is retracted. Colour can be matched to the colour of the blind or facade.



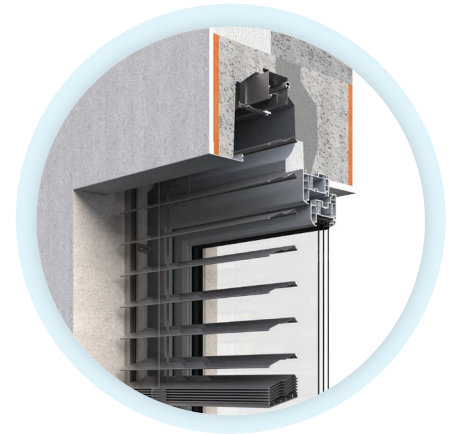
### IN A SELF-SUPPORTING VERSION OF COMFORT SYSTEM

It is used where there is no possibility to fix the head rail on the building. The blind is only anchored into the reveal through the guide rails in this case.



### IN AN UNDER-THE-FACADE CASSETTE (THE BUILT-IN BOX)

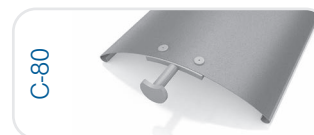
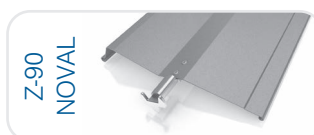
Hidden under the facade of the house, built-in boxes for external blinds have become a major trend in recent years. However, this needs to be considered before the actual construction of your home or before additional overcladding.



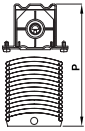
### LINTEL VERSION HELUZ

The special building lintel designed for placement of external blinds is used as a standard carrier lintel. External blinds can be installed into it even after the building is completed.

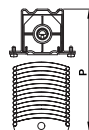
## Slats types



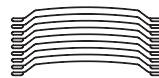
## Height of retracted blinds

		Z-90 NOVAL		Z-70		T-80		C-80 VENTAL		C-80	
		crank	motor	crank	motor	crank	motor	crank	motor	crank	motor
HEIGHT (cm)	50 - 75	12	14	15	17	13	15	12,5	14,5	14	16
	75,1 - 100	14	16	16	18	15	17	14	16	16	18
	100,1 - 125	15	17	17	19	16	18	15,5	17,5	18	20
	125,1 - 150	16	18	19	21	17	19	17	19	20	22
	150,1 - 175	18	20	21	23	18	20	18,5	20,5	22	24
	175,1 - 200	19	21	23	25	19	21	20	22	24	26
	200,1 - 225	20	22	25	27	20	22	21,5	23,5	26	28
	225,1 - 250	22	24	27	29	21	23	22,5	24,5	28	30
	250,1 - 275	23	25	28	30	22	24	23,5	25,5	30	32
	275,1 - 300	24	26	29	31	23	25	25	27	32	34
	300,1 - 325	25	27	31	33	24	26	26,5	28,5	34	36
	325,1 - 350	27	28	33	35	25	27	27,5	29,5	36	38
	350,1 - 375	28	30	35	37	27	29	29	31	38	40
	375,1 - 400	29	31	37	39	28	30	30	32	40	42
	400,1 - 425	30	32	38	40	29	31	31,5	33,5	42	44
	425,1 - 450	31	33	40	42	30	32	33	35	44	46
450,1 - 475	33	35	41	43	31	33	34,5	36,5	46	48	
475,1 - 500	34	36	43	45	32	34	36	38	48	50	

		C-80 CC		C-60		F-80		EXT-50		EXT-50 H	
		crank	motor	crank	motor	crank	motor	crank	motor	crank	motor
HEIGHT (cm)	50 - 75	14	16	18	20	11,5	13,5	11,5	13,5	9,5	9,5
	75,1 - 100	16	18	20	22	12,5	14,5	13	15	11	11
	100,1 - 125	18	20	22	24	14	16	13	15	12	12
	125,1 - 150	20	22	24	26	14,5	16,5	14	16	13,5	13,5
	150,1 - 175	22	24	26	28	15,5	17,5	15,5	17,5	15	15
	175,1 - 200	24	26	28	30	16	18	17	19	16	16
	200,1 - 225	26	28	30	32	17	19	18,5	20,5	20	22
	225,1 - 250	28	30	32	34	19	21	20	22	-	-
	250,1 - 275	30	32	34	36	20,5	22,5	21	23	-	-
	275,1 - 300	32	34	36	38	22	24	22	24	-	-
	300,1 - 325	34	36	38	40	23	25	23,5	25,5	-	-
	325,1 - 350	36	38	40	42	24,5	26,5	24,5	26,5	-	-
	350,1 - 375	38	40	42	44						
	375,1 - 400	40	42	44	46						
	400,1 - 425	42	44	46	48						
	425,1 - 450	44	46	48	50						
450,1 - 475	46	48	50	52							
475,1 - 500	48	50	52	54							



### PROTAL



	crank / motor		crank / motor		crank / motor		crank / motor	
	HEIGHT (cm)							
75,0 - 171,3	25,7	236,7 - 245,1	32,0	310,7 - 319,0	38,4	384,5 - 392,8	44,7	
171,4 - 172,5	26,3	245,2 - 246,4	32,7	319,1 - 320,2	39,0	392,9 - 394,1	45,4	
172,6 - 189,3	26,9	246,5 - 263,3	33,3	320,3 - 337,1	39,6	394,2 - 411,0	46,0	
189,4 - 190,6	27,4	263,4 - 264,6	34,0	337,2 - 338,4	40,3	411,1 - 413,2	46,7	
190,7 - 199,1	28,2	264,7 - 273,0	34,6	338,5 - 346,8	40,9	413,3 - 429,3	47,3	
199,2 - 200,4	28,8	273,1 - 274,2	35,2	346,9 - 348,1	41,6	429,4 - 431,5	48,0	
200,5 - 217,3	29,5	274,3 - 291,1	35,8	348,2 - 365,0	42,2	431,6 - 439,6	48,6	
217,4 - 218,6	30,2	291,2 - 292,4	36,5	365,1 - 366,3	42,9	439,7 - 441,8	49,3	
218,7 - 235,4	30,8	292,5 - 309,3	37,1	366,4 - 382,5	43,5	441,9 - 450,0	49,9	
235,5 - 236,6	31,4	309,4 - 310,6	37,8	382,6 - 384,4	44,1			

## Design options

Blind type	Slat width	Operation				Guiding			Various versions				
		Crank	Motor	Cord	Chain	Guide rail	Wire	Extra wire	Tilting to both sides	Open version	Self-supporting system	MISTRAL	Sloped versions
Z-90 NOVAL	90 mm	■	●	NO	NO	■	●	●	NO	●	●	●	●
Z-70	70 mm	■	●	NO	NO	■	●	●	NO	●	●	NO	●
T-80	80 mm	■	●	NO	NO	■	●	●	YES	●	●	●	●
C-80 VENTAL	80 mm	■	●	NO	NO	■	NO	NO	NO	●	●	●	●
C-80	80 mm	■	●	NO	NO	■	●	●	YES	●	●	●	●
C-80 CC	80 mm	■	●	NO	NO	■	●	●	NO	●	●	●	●
C-60	60 mm	■	●	NO	NO	■	●	●	YES	NO	●	●	●
F-80	80 mm	■	●	NO	NO	■	●	●	YES, only in a wire	●	●	NO	NO
EXT-50	50 mm	●	NO	■	●	NO	■	●	■	NO	NO	NO	NO
EXT-50 H	50 mm	●	●	NO	NO	NO	■	●	■	NO	NO	NO	NO
PROTAL	96 mm	●	■	NO	NO	■	NO	NO	NO	YES	YES	NO	NO

Legenda: ■ standard ● for surcharge / discount

### Minimum depth of mounting space for slats in cm

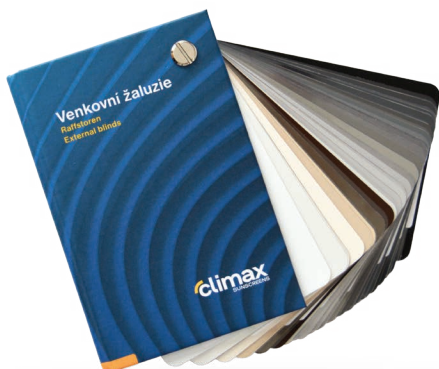
Blind type	Wire / Guide rail / Built-in rails
Z-90 NOVAL	14
Z-70	12
T-80	12
C-80 VENTAL	13
C-80	12
C-80 CC	13
C-60	10
F-80	12
EXT-50	8.7*
EXT-50 H	10*
PROTAL	12

\* Version only in a wire



## Colour versions

Everyone can choose from our wide range of colours and shades! In the basic menu, you will find shades of white, bronze, brown, silver, gray, anthracite or black. If you are unsure of the choice of the right colour, visit the store of one of our partners. They will show you our colour collections and will be happy to advise you on your choice.



## Control types

Motorised – 230 V electric motor or 12 V solar-powered electric motor with control options:

- switch
- automatic controls (solar and wind sensor)
- remote control
- smart mobile device (Tahoma system)

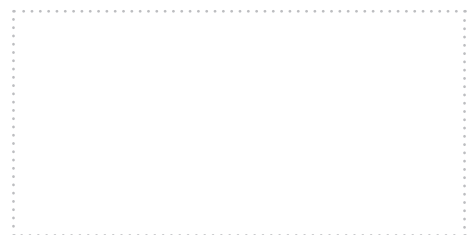
Manual:

- crank with gearbox





For more information go to [www.servisclimax.eu](http://www.servisclimax.eu)



Your CLIMAX partner:

The data given in this material is purely informative. For more details on design options of this product and other products of SERVIS CLIMAX a.s., please contact our nearest business partner. You will find the complete offer, including technical support, on the website [www.servisclimax.eu](http://www.servisclimax.eu)